



MIXPAC™

T-Mixer™ Colibri™ Plus Breakable



THE UNIVERSAL SOLUTION THAT
WILL SIMPLIFY YOUR LIFE

Stefen Koubi, Associate Professor,
Operative Dentistry, University of Marseille



CLINICAL CASE

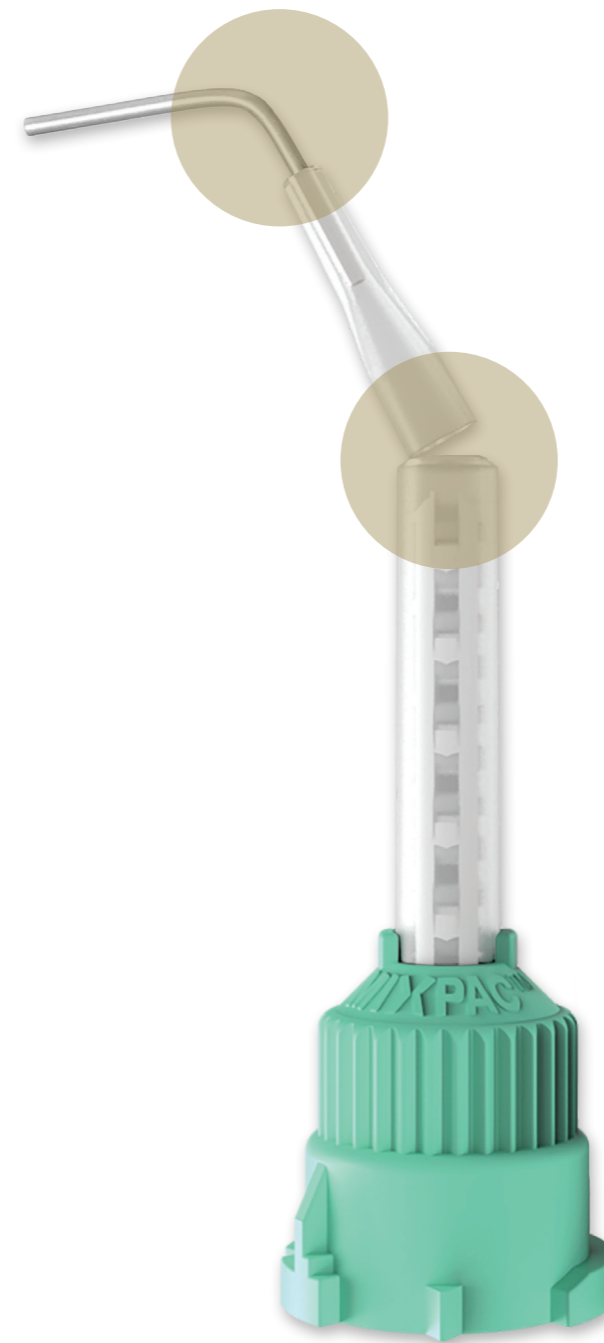


DENTAL

MIXPAC™

T-Mixer™ Colibri™ Plus Breakable

THE ALL-IN-ONE SOLUTION



Everyday dentistry is primarily focused on the restorative and prosthetic treatment of vital- and non-vital teeth. The majority of clinical procedures performed in daily practice surround impressions of the sulcular margin for crown and bridge, implant supported restorations and reconstruction of indirect restorations, which include impressions of the root canal anatomy. In addition, permanent cementation of an indirect fabricated post and core using self-adhesive cement, tooth reconstruction with a fiber post and core build-up material as well as direct-placed fillings in large tooth cavities using bulk filled composite materials are standard practice today.

Although quite common, these types of procedures can often present significant clinical challenges. That is, they require the use of different types materials, various steps and techniques, while simultaneously challenged with difficult intraoral access when syringing or filling the root canal (e.g. narrow diameter of the root canal, location of the tooth especially in the posterior region, positioning or bending of the tip to improve clinical access in the anterior and posterior area without hindering the flow of material).

THE ALL-IN-ONE SOLUTION

medmix Switzerland AG, who is based in Switzerland and the world's leading manufacturer of two-component, mixing and hand-held dispensing systems, is excited to present their latest development in the Colibri Family: The T-Mixer Colibri Plus Breakable.

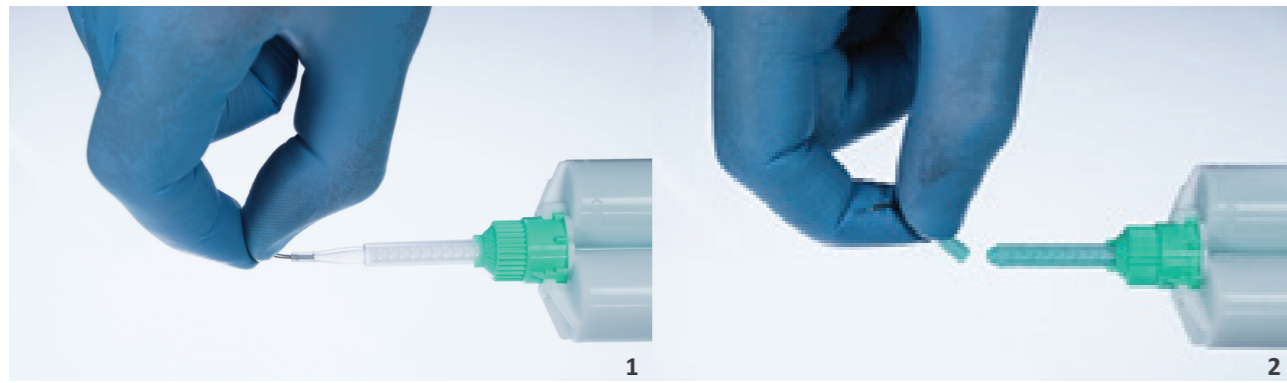
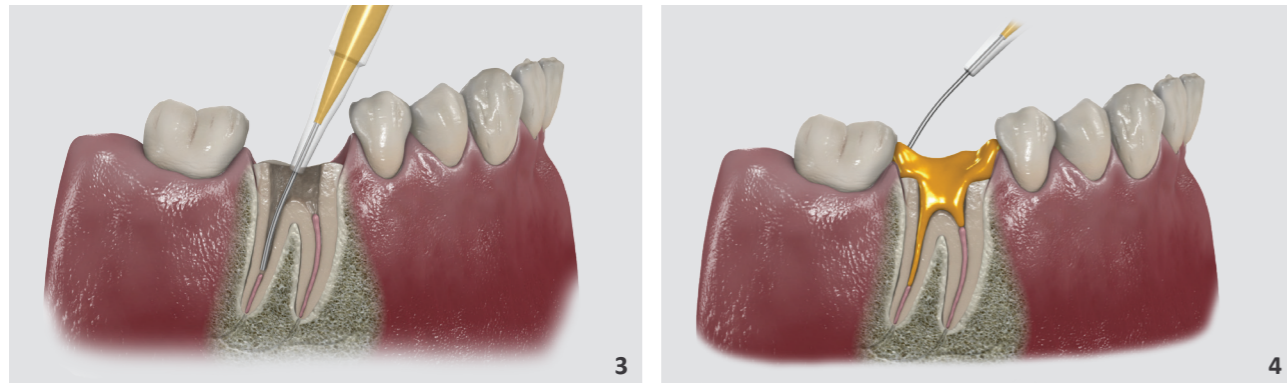


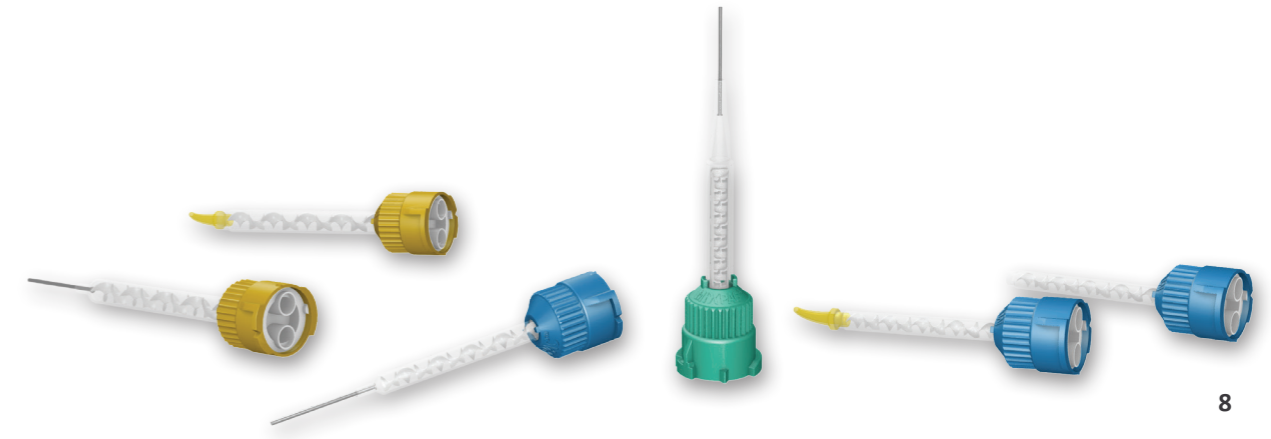
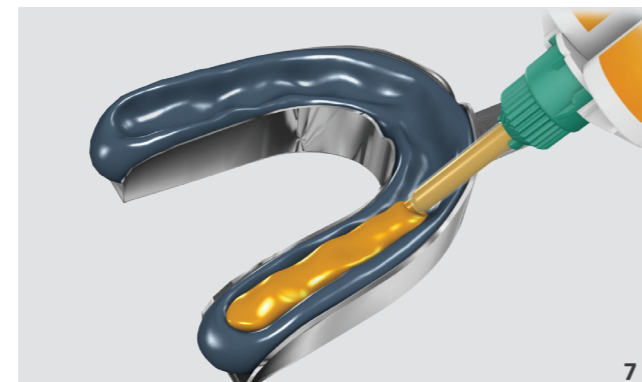
Fig. 1-2 demonstrate that the stainless steel cannula can be easily bent and removed at the breaking zone.
Source: Prof. Fabio M. Salomão, PhD, MSc, DDS

In comparison to conventional mixing tips, the innovative design of the MIXPAC™ T-Mixer™ Colibri™ Plus Breakable simplifies operative procedures by reducing the number of application steps in the workflow. Its versatile bendable integrated stainless steel cannula allows the user to customize the position of the tip for different clinical situations. This mixing tip also provides easy, precise and safe application thanks to its ergonomic handling.

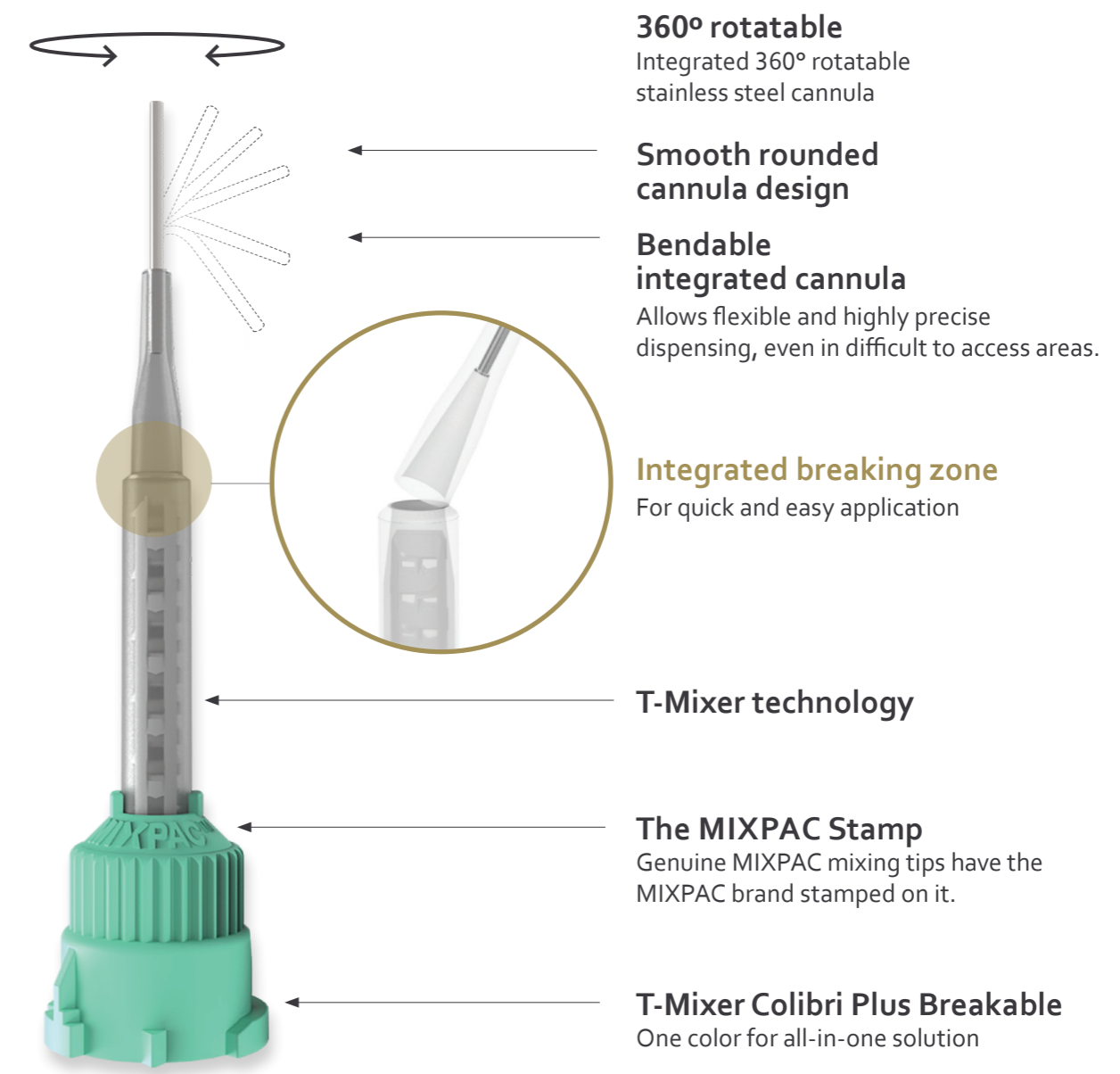


The MIXPAC T-Mixer Colibri Plus Breakable is indicated for use with various types of materials and clinical applications e.g. impressions of root canals and preparations (Fig. 3-5), which help simplify selection of the mixing tip in the dental practice.

For fast and easy application, the larger outlet of the mixing tip can be used to apply larger amounts of material intraorally around the preparation or extraorally into the tray after breaking off the anterior part of the tip at the integrated breaking zone (Fig. 6-7).



With MIXPAC™ T-Mixer™ Colibri™ Plus Breakable, less amount of storage space will be required in your dental practice.





With the exclusive MIXPAC™ T-Mixer™ mixing tip, you can reduce material waste by up to 40%.

10

KEY TECHNICAL FEATURES

- Integrated stainless steel cannula is bendable and rotatable up to 360°, which allows for precise clinical application with a low risk of trauma to soft tissue thanks to its smooth, rounded design.
- Integrated breaking zone in the anterior part of the mixing tip can be quickly and easily removed after accurate intraoral application around the preparation which allows for fast and easy extraoral application of large amounts of material into the tray.
- Bendable stainless steel cannula provides universal access to different root canal anatomies (including narrow diameter root canals, e.g. canal prep minimum with Peeso Reamer no. 3, 1.1 mm) while maintaining its memory of internal diameter to ensure for a constant flow of material.
- Reduced material waste in the mixing tip due to the innovative T-Mixer technology (Fig. 10).



11

Subgingival impression with light body silicone material provides precise application with a low risk of trauma to soft tissue thanks to its smooth, rounded cannula design.

Fig. 11
Source: Dr. Stefen Koubi



12

Subgingival sulcular impression of anterior crown preparations. Finger support can be used to provide additional stability during the application.



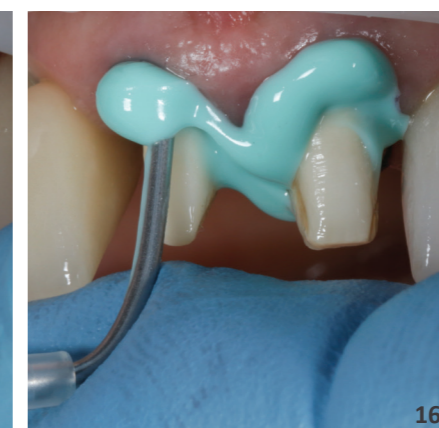
13



14



15



16

Fig. 12-16
Source: Prof. Fabio M. Salomão, PhD, MSc, DDS



17



18

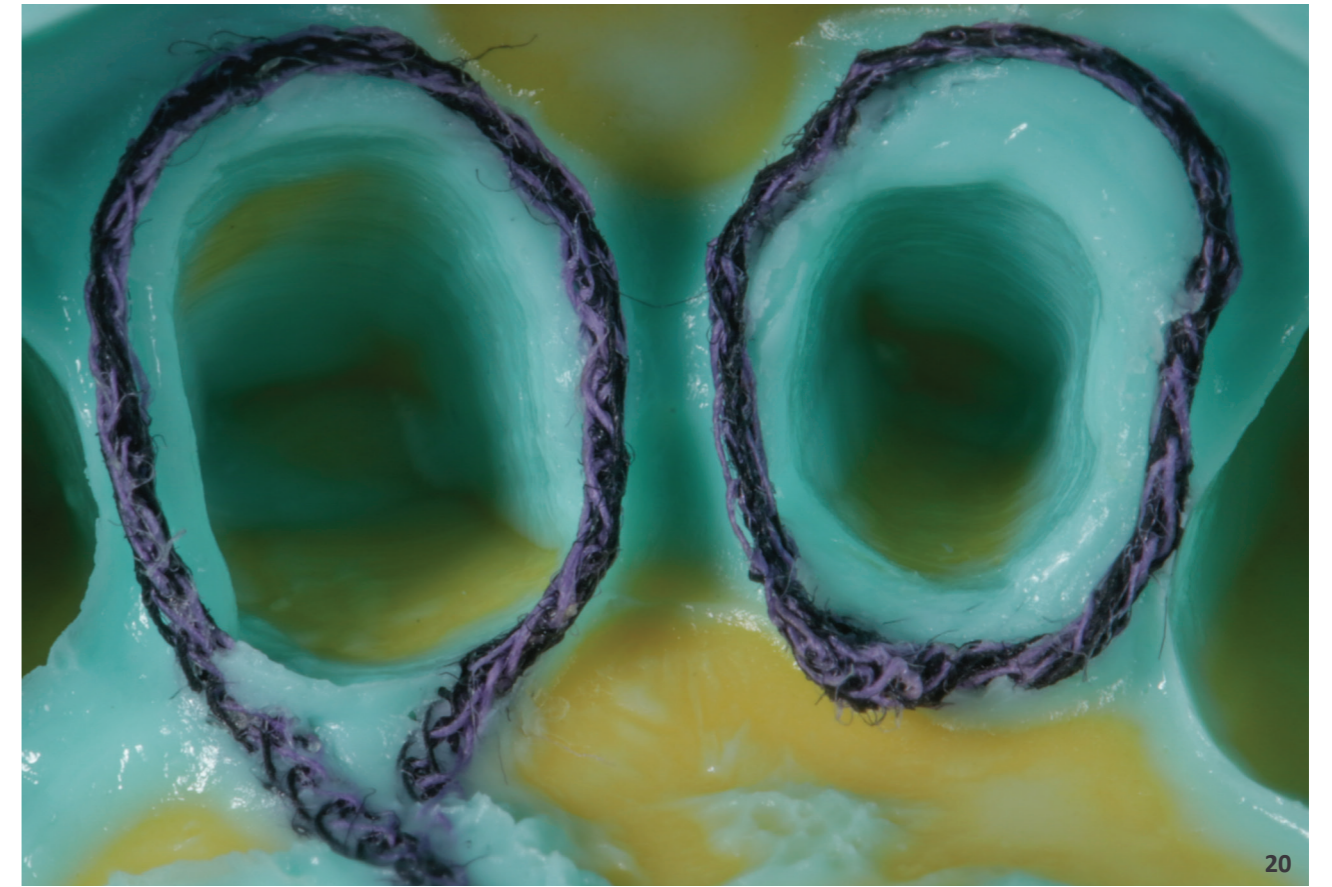
Intra- and extraoral application of large amounts of material. For fast and easy application, large amounts of the material can be applied intraorally around the preparation and extraorally into the tray after the removal of the stainless steel cannula.

Fig. 17-19

Source: Prof. Fabio M. Salomão, PhD, MSc, DDS



19

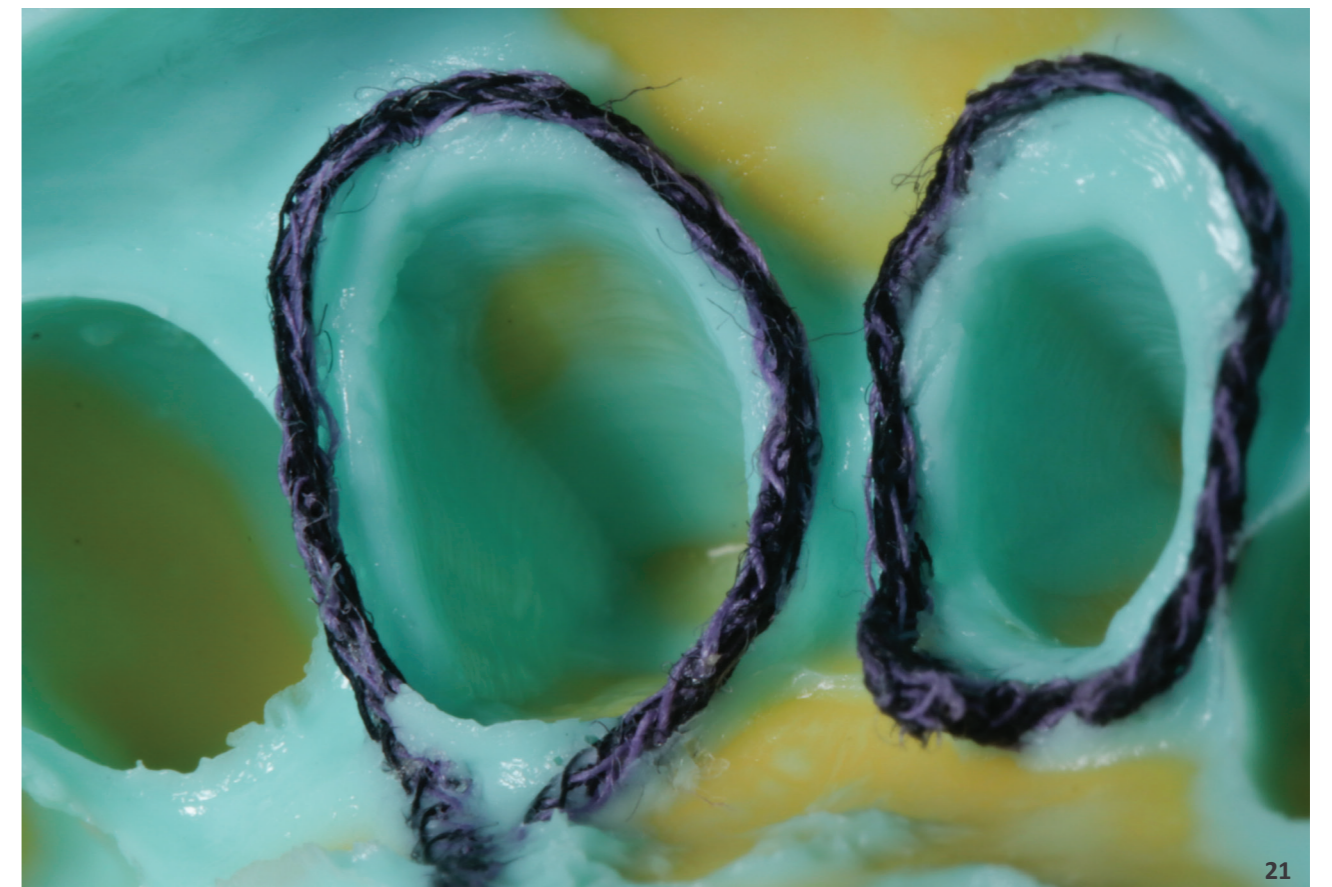


20

Final impression in the anterior region demonstrates highly detailed margins with no voids or air entrapment.

Fig. 20-21

Source: Prof. Fabio M. Salomão, PhD, MSc, DDS

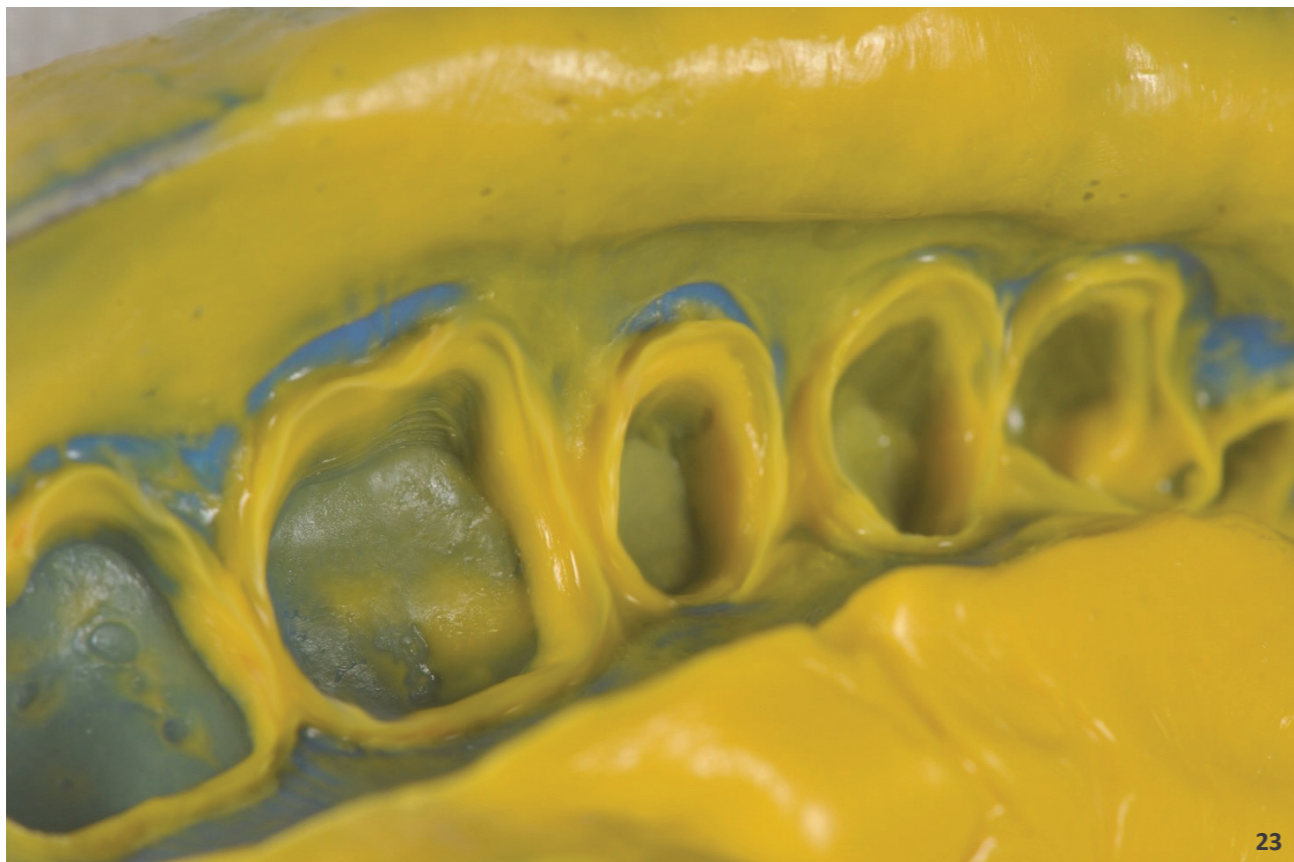


21



Final impression in the posterior region demonstrates accurate results.

Fig. 22-23
Source: Dr. Stefen Koubi



Post and core impression demonstrates homogeneously mixed material without voids thanks to the accuracy of the mixing tip.

Fig. 24
Source: Dr. Stefen Koubi

In summary, the MIXPAC™ T-Mixer™ Colibri™ Plus Breakable simplifies selection of the mixing tip, since it provides dentists with an innovative, versatile and efficient mixing application system indicated for multiple types of prosthetic impression materials and applications.

CLINICAL TESTIMONIALS

"The T-Mixer™ Colibri™ Plus Breakable is a very innovative, smart and easy mixing system that I was looking to implement for years in my every day practice."

Dr Galip Gurel (Istanbul Turkey)



"As an expert of adhesive dentistry, I really appreciate the T-Mixer Colibri Plus Breakable for easily restoring non-vital teeth with a fiber post. It is really a plug and play approach."

Dr Walter Devoto (Sestre Levante Italy)



"The T-Mixer Colibri Plus Breakable is a new versatile instrument that can be used for different indications in prosthetic treatment or for operative dentistry. It is very easy to use and provides significant simplification for the application of composite or light body silicone."

Pr Nitzan Bichacho (Tel Aviv Israel)



"T-Mixer Colibri Plus Breakable is not only a beautiful device for support, but it also helps to improve the quality of dispensing/application and simplifies the treatment itself making it faster and safer. It is also an instrument that fits perfectly with the style Italian philosophy."

Pr Angelo Putignano (Ancona Italy)



"Being able to use the same mixing tip for almost all clinical situations is a must for my dental practice, and it helps to plan my inventory and storage space requirements. It is much easier to eliminate the step of attaching an intra oral tip to the mixer system and get all of the advantages of accurate application in situations with difficult access using the metal cannula which can be customized as you wish for very fast dispensing/application after removal of the metal cannula."

Dr Eric Van Dooren (Antwerp Belgium)



"I was very happy to test it for more than one year; and I am looking for my next shipment because I miss it. Once you use the T-Mixer Colibri Plus Breakable, you can't do without."

Dr Patrice Margossian (Marseille)





Swiss Quality
at the Highest Level

medmix Switzerland AG
Ruetistrasse 7
9469 Haag, Switzerland
P +41 81 414 70 00
www.medmix.swiss



Legal Notice: This brochure is a general presentation. The information contained in this publication is believed to be accurate and reliable but is not to be construed as implying any warranty or guarantee of performance. We waive any liability and indemnity for effects resulting from its application. Please, contact us for a description of the warranties and guarantees offered with our products. Directions for use and safety will be given separately. All information herein is subject to change without notice. MIXPAC, T-Mixer, and Colibri are trademarks of medmix Switzerland AG. medmix is a trademark of medmix AG. © medmix Switzerland AG 2022